



CREATE YOUR
MASTERPIECE

DETAILING RANGE

WHO ARE FARÉCLA?

A UK -based company within the Saint-Gobain Group, Farécla Products Ltd manufactures surface finishing products which are used on a wide variety of substrates across multiple market sectors. From compounds and applicators, to paint cups, microfibre cloths and other workshop ancillaries, Farécla has provided surface finishing solutions to automotive bodyshops, detailers, boat builders, wood workers, composites manufacturers and GRP moulders since 1952, and its products are now sold in over 120 countries worldwide.

FIG 1: In-house laboratory and testing facilities



FIG 2: Unique Farécla abrasive powder



What's clever about G3 Pro formulas?

G3 Professional formulas have been engineered at a molecular level by our experienced technical team and scientists to make them user friendly, effective and suitable for use on multiple surfaces. Technically advanced formulas developed where relevant alongside paint and lacquer manufacturers make them safe and effective for all paint types and surfaces in many sectors including automotive, marine, aerospace and wood.

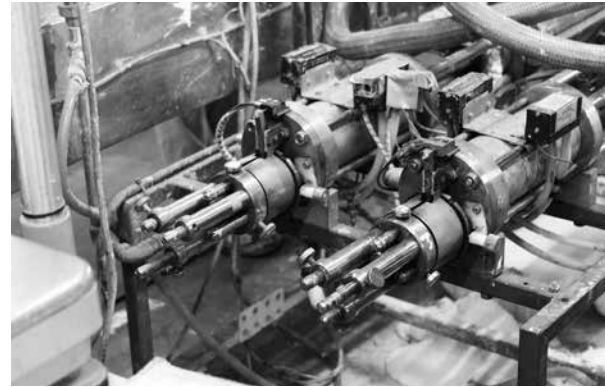


FIG 3: UK based factory and filling lines

FOR PERFECTLY DETAILED SURFACES

G3 Pro formulas are a range of detailing products designed to **CLEAN**, **RESTORE** and **FINISH** surfaces such as automotive paintwork, boat surfaces and wood lacquers, amongst others. These sections help organise the order that the products are used in the perfect detailing process, even though some products fit into multiple categories.

CLEAN

A clean surface is essential before rectifying surfaces. Contaminants can cause surface defects such as scratches or dulling, and odours or bad smells, if they are not removed before the restoring and finishing stages. Cleaning with G3 Pro products facilitates safe removal of these contaminants, with very little contact between the surface and your hands. This process allows you to move on to rectifying the newly cleaned surface.

RESTORE

After the surface is clean, any defects, from faded paintwork to swirl marks and light scratches, will be more clearly visible. G3 Pro products use Engineered Abrasive Technology (E.A.T.s) to **PERMANENTLY** remove these defects, leaving a smooth, shiny surface. This process produces a perfectly, defect-free area that is ready to be sealed and protected.

FINISH

This process will protect the work you have put into cleaning and restoring the vehicle. Interior surfaces will be left looking and smelling like new, exterior bodywork, wheels and engine bays will be given a water-repellent, deep gloss finish. All surfaces will have a high level of protection and be far easier to clean next time around.

INTERIOR DEEP CLEANING

Remove carpets and mats, then vacuum all interior



**PRIOR TO
DETAILING**

**G3 Pro
Multicleaner**



**LEATHER
SEATS**

**G3 Pro
Leather Cleaner**



**CLEAN &
DRESS**

**G3 Pro
Super Dressing**



**WINDOWS
& MIRRORS**

**G3 Pro
Glass Cleaner**

TIP: For cool climates pre-wet the exterior with water before interior detailing to help loosen and soften the dirt.

Use **G3 Pro Super Dressing** on rubber, vinyl and plastics (internal use only).

EXTERIOR WHEEL & TYRE DETAILING

This process can be done before or after **EXTERIOR BODYWORK CLEANING**. This allows for dressing to be removed if it gets onto bodywork. However, dirt from the bodywork will slide down onto wheels.



PRE-CLEAN WHEELS

**G3 Pro
Snow Foam**

G3 Pro Snow Foam softens dirt to prevent damage to the surface.



CLEAN WHEELS

**G3 Pro
Wheel Cleaner**

Use **G3 Pro Wheel Cleaner** on the bodywork around the wheel to remove brake dust.



DURABLE PROTECTION

**G3 Pro
Tyre Shine Gel**

Create either an 'as new' or 'wet look' finish.

EXTERIOR BODYWORK CLEANING



PRE-CLEAN BODYWORK

**G3 Pro
Snow Foam**



CLEAN BODYWORK

**G3 Pro
Shampoo**



DEEP CLEAN

**G3 Pro
Rapid Detailer
and Deep Clean
Clay Mitt**



QUICK CLEAN

**G3 Pro
Rapid Detailer
or Multicleaner**



G3 Pro Snow Foam softens dirt to prevent damage to the paintwork during the shampoo stage.

ENGINE BAY CLEANING & DRESSING

*This process is carried out before
EXTERIOR BODYWORK RECTIFICATION.*



CLEAN

**G3 Pro
Snow Foam**
or **Multicleaner**



**CLEAN,
RESTORE &
DRESS**

**G3 Pro
Super Dressing**



**QUICK
CLEAN**

**G3 Pro
Multicleaner**



Spray either **G3 Pro Snow Foam**
or **G3 Pro Multicleaner** onto the
engine with a lance / jet / pressure
washer. Agitate with a brush.

G3 Pro Super Dressing
is also a light cleaner.

Use **G3 Pro Multicleaner**
directly from its trigger spray
for cleaning touch-ups.

PAINT RECTIFICATION **- A KEY ELEMENT OF DETAILING**

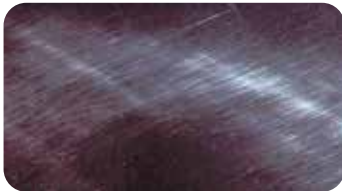
Paint rectification on cars and other vehicles deal with the surface area of the bodywork. From time to time, surfaces can become damaged from scrapes and chemical damage. Rectifying means bringing the surface finish back to its original showroom look.



LIGHT SCRATCHES & SCUFFS - These are often caused by hedgerows and tree branches scraping along the bodywork, bunches of keys bouncing against the car, buttons on clothing, supermarket trolleys and pushchair handles rubbing along the car.



SWIRL MARKS - These are spider web-like circular fine lines that show up in bright sunlight. Often more visible on metallic and clearcoat lacquered surfaces. They are caused by automatic car wash brushes and general cleaning with unclean materials.



HOLOGRAMS - These are like swirls but are finer and give a 3D effect. They are caused by bad technique when using a machine polisher.



FADING / DULLING & CHALKING - This is when UV rays from the sun break down the surface shine over time. Airborne city pollutants can have the same effect, causing the surface to appear cloudy and pale.

EXTERIOR PAINTWORK RECTIFICATION



**SCRATCH
REMOVAL**

**G3 Pro
Scratch Remover
Liquid**



**FADING &
MINOR
DEFECTS**

**G3 Pro
Colour Restorer**



**MINOR
DEFECTS &
PROTECTION**

**G3 Pro
All-In-One Polish**



**CHOOSE
A WAX**

**G3 Pro
Spray Wax
or Resin Superwax**



**WINDOWS
& MIRRORS**

**G3 Pro
Glass Cleaner**



All our **RESTORE** products are **PERMANENT** (they do not contain fillers).
G3 Pro Scratch Remover will remove or diminish the look of scratches.
Occasionally this may result in dulling / fading which can be rectified using
Colour Restorer or **All-In-One Polish**.



G3 PRO **SNOW FOAM**

G3 Pro Snow Foam is a pH neutral cleaner, safe for all surfaces and paint finishes. It is ideal for touchless cleaning before full exterior work and doesn't strip off previously applied sealants or waxes. High foaming action softens and lifts dirt, making it easier and safer to remove damaging particles without touching the surface. Use before the shampoo or wash & wax stage.

DIRECTIONS

- 1** - Add 30ml of Snow Foam to 120ml of water (150ml of solution in total) in a jet / pressure washer (150ml is enough for an average size family saloon)
- 2** - Spray over the whole vehicle, and leave until the foam starts to drip off
- 3** - Rinse with clean water from a hose or jet / pressure washer

TIP: Can be used as a shampoo - 2 capfuls to a 15 ltr bucket of lukewarm water.

SIZE	FARÉCLA CODE	ART NO.
500 ml	7205-EX	780727 64781

G3 PRO **WHEEL CLEANER**



G3 Pro Wheel Cleaner is a touchless cleaner for all wheel types, including alloys, steel, chrome, painted and plastic trims. The colour changing technology activates as brake dust and other iron rich contaminants dissolve. It is non-staining, can be used on bodywork around the wheel and the gel formula clings to the wheel surface for maximum effect.

DIRECTIONS

- 1** - Rinse the wheels prior to use, ideally with a jet / pressure washer
- 2** - Spray liberally onto wheels that are cool to the touch
- 3** - If needed, agitate stubborn areas with a brush
- 4** - Spray onto the wheel arches and above and behind the front and back wheels to safely remove brake dust
- 5** - Before product dries (2 to 5 minutes), wash off

CAUTION: Do not wash microfibre cloth in washing machine after using on wheels.

SIZE	FARÉCLA CODE	ART NO.
500 ml	7209-EX	780727 64782



G3 PRO **SHAMPOO**

G3 Pro Shampoo is a highly concentrated formulation, safe on all surfaces and has a high foaming action. Its slick, smooth formula, softens and removes harsh contaminants without scratching, leaving a high shine, protective layer.

DIRECTIONS

- 1** - Use one bucket of **G3 Pro Shampoo** solution and one bucket of warm, clean water
- 2** - For the **G3 Pro Shampoo** solution, use approximately 2 capfuls per 15 ltr bucket
- 3** - Use a wash mitt, washing it in the clean water between each application
- 4** - After washing, rinse off soapy residue from the surface, then dry with a clean, dry towel.

NOTE: Does not remove existing wax layers.

SIZE	FARÉCLA CODE	ART NO.
500 ml	7252-EX	780727 64783

G3 PRO **LEATHER CLEANER**



G3 Pro Leather Cleaner has a foaming action which reaches deep into soiled areas and lifts dirt making it easy to wipe away. It leaves a natural, 'new look' finish, and a safe, non-slippery surface. It can also be used in the home on leather furniture.

DIRECTIONS

- 1** - Spray liberally onto leather
- 2** - Agitate to a lather with a soft brush and work into the leather seats
- 3** - Wipe clean with a clean, dry microfibre cloth and allow to dry naturally

TIP: Try using in the home on leather furniture

SIZE	FARÉCLA CODE	ART NO.
500 ml	7200-EX	780727 64797



G3 PRO **RAPID DETAILER**

G3 Pro Rapid Detailer is a mild cleanser for use between washes to prevent the build-up of contaminants that can become ingrained into your paintwork. It removes light dirt, dust and fingerprints and leaves a 'just-waxed', high gloss finish without stripping previously applied polishes and waxes from the surface. It is a safe product that can be used everyday.

DIRECTIONS

- 1** - Working in sections, lightly spray the area to be cleaned with **G3 Pro Rapid Detailer**
- 2** - Spread product evenly using a dry, clean microfibre
- 3** - Buff off immediately with a soft, clean, dry cloth using light circular motions, or use with **G3 Pro Deep Clean Clay Mitt** to remove ingrained dirt particles which can cause dulling / fading over time

CAUTION: Keep the **G3 Pro Deep Clean Clay Mitt** lubricated during use, and clean & dry during storage.

SIZE	FARÉCLA CODE	ART NO.
500 ml	7193-EX	780727 64773

G3 PRO **DEEP CLEAN CLAY MITT**

This revolutionary, re-usable **G3 Pro Deep Clean Clay Mitt** uses an advanced rubber polymer technology that easily removes ingrained dirt, bugs, tar spots and dulling pollutants from paintwork, windscreens and headlights.

DIRECTIONS

- 1** - Clean bodywork with **G3 Pro Shampoo**
- 2** - Spray **G3 Pro Rapid Detailer** onto the selected work area and the mitt
- 3** - Gently work the mitt over the lubricated surface with light pressure without letting it dry
- 4** - Wipe away any residue with a clean, dry microfibre cloth or soft fleece
- 5** - Before re-using, rinse off accumulated contaminants on the mitt with water.



SIZE
500 ml

FARÉCLA CODE
7191

ART NO.
780727**06632**

G3 PRO MULTICLEANER

G3 Pro Multicleaner is a rigorous yet safe cleaner for use on all soft and hard surfaces, including wheel arch liners, engine bays, carpets and upholstery. It is a silicone-free product that will not discolour rubber, plastics, vinyl or fabric. For maximum performance use neat, but it can be diluted with water for lighter contamination.

DIRECTIONS

INTERIOR - Thoroughly vacuum interior before use

- 1** - Spray onto the area to be cleaned
- 2** - Wipe clean, removing any residue

EXTERIOR

- 1** - Spray onto the area to be cleaned
- 2** - Agitate with a brush or microfibre cloth. Repeat for heavily soiled areas
- 3** - Wipe clean, removing any residue

NOTE: Powerful on stubborn marks, breaking down oil and grease. Use in a jet / pressure washer for engine bays.

SIZE	FARÉCLA CODE	ART NO.
500 ml	7199-EX	780727 64774



G3 PRO SCRATCH REMOVER



Using Engineered Abrasive Technology particles, **G3 Pro Scratch Remover Liquid** permanently removes minor scratch marks that do not stop your fingernail when run over the surface. The appearance of deeper scratches will be diminished. The liquid spreads easily and is ideal for larger areas.

DIRECTIONS

- 1** - Ensure surface is spotlessly clean, dry and cool
- 2** - Dampen a **G3 Pro White Applicator Waffle Pad**
- 3** - Apply a small amount to the applicator
- 4** - Apply even pressure in a straight back and forth motion starting left to right and then up and down
- 5** - Stop once the scratch is removed or if the paint begins to fade. If dulling appears **DON'T PANIC!** Simply use **G3 Pro Colour Restorer** with a clean **G3 Pro Applicator Waffle Pad** or **G3 Pro All-In-One Polish**. This is most likely on darker paints
- 6** - Remove residue with a soft, clean, dry cloth

SIZE	FARÉCLA CODE	ART NO.
500 ml	7164-EX	780727 64793



G3 PRO **COLOUR RESTORER**

G3 Pro Colour Restorer uses a high grade of light polishing abrasives to permanently remove minor defects such as micro-scratches, light oxidation, holograms and tree sap that cause dulling and fading. This will bring paint back to its original showroom condition. For best results, prepare by washing the surface with **G3 Pro Shampoo**. After using **G3 Pro Colour Restorer** finish with **G3 Pro Spray Wax** or **G3 Pro Resin Superwax** for the ultimate protection and shine.

DIRECTIONS

- 1** - Make sure panels are clean and cool. Lightly dampen a **G3 Pro White Applicator Waffle Pad**
- 2** - Apply a small amount of the **G3 Pro Colour Restorer** to the applicator
- 3** - Use a straight back and forth motion - left to right, then up and down
- 4** - Apply even pressure and repeat until a desired finish is achieved
- 5** - Remove residue with a soft, clean, dry cloth

SIZE	FARÉCLA CODE	ART NO.
500 ml	7195-EX	780727 64794

G3 PRO **ALL-IN-ONE POLISH**



G3 Pro All-In-One Polish restores the condition of many different surfaces and coatings including paint, lacquer, chrome, aluminium, plastic lenses and glass. Use by hand or with a polishing machine to eliminate medium and minor scratches, swirls, holograms, oxidation, watermarks and more, leaving a high shine finish and a hydrophobic layer prior to final protection.

DIRECTIONS

- 1** - Ensure surface is spotlessly clean, dry and cool
- 2** - Apply to the surface with a damp G3 Pro White Waffle Applicator Pad or a microfibre cloth
- 3** - Lightly rub on the surface in a back and forth, up and down motion
- 4** - Allow to dry to a haze
- 5** - Buff with a clean, dry microfibre cloth to a high gloss shine

NOTE: Can be applied by hand or machine.

SIZE	FARÉCLA CODE	ART NO.
500 ml	7251-EX	780727 64796



G3 PRO **SUPER DRESSING**

G3 Pro Super Dressing removes dirt, dust, grime, chocolate and many other stubborn contaminants, without leaving a slippery surface. Dries quickly to leave a subtle, 'new look' sheen. Can be used as an engine dressing after cleaning with **G3 Pro Snow Foam** or **G3 Pro Multicleaner** when applied with a brush and/or a clean, dry microfibre cloth.

DIRECTIONS

- 1** - Spray sparingly onto the surface or a clean, dry cloth
- 2** - Wipe on to clean, then buff off with a clean, dry microfibre cloth to leave a natural finish
- 3** - Further applications will build the gloss level if a high shine finish is desired

SIZE
500 ml

FARÉCLA CODE
7201-EX

ART NO.
780727**64786**

G3 PRO **TYRE SHINE GEL**



Durable tyre conditioner that gives an 'as new look' or a 'high shine' finish. **G3 Pro Tyre Shine Gel** is easy to apply, eliminates the mess of sling, drips and streaks, contains no silicones or paint that can prevent the rubber breathing, and prevents discolouration and premature cracking.

DIRECTIONS

- 1** - Tyres must be spotlessly clean, and for optimum performance, dry
 - 2** - Add a small amount to a microfibre cloth, wipe onto the tyre wall and work into the surface with a brush
- FOR A NEW TYRE LOOK**
- 3** - Wipe off before the product dries
- FOR A HIGH SHINE WET LOOK**
- 3** - Leave product to dry fully before driving in order to avoid sling. Add more applications for an increased gloss

TIP: Dilute with water (ratio 1:1) for sprayable application.

SIZE	FARÉCLA CODE	ART NO.
500 ml	7213-EX	780727 64790



G3 PRO **SPRAY WAX**

G3 Pro Spray Wax enhances the surface gloss level and prolongs previously applied wax finishes. It is silicone-free, temperature insensitive and contains UV inhibitors. Does not stain rubber or plastics. Use on wet or dry paintwork, gel coats or lacquered surfaces to quickly restore that 'just waxed' look.

DIRECTIONS

- 1** - Ensure surface is spotlessly clean, dry and cool
- 2** - Spray onto the surface or a clean, dry microfibre cloth
- 3** - Wipe over the surface until the product disappears
- 4** - After drying, re-apply to add further protective layers as desired and buff to a shine

SIZE	FARÉCLA CODE	ART NO.
500 ml	7211-EX	780727 64789

G3 PRO **RESIN SUPERWAX**

G3 Pro Resin Superwax is an interlinked protection system constructed from the highest grade synthetic beeswax, montanic and paraffin waxes to provide an easy to apply concentrated wax with unprecedented protection for up to 4 months and mirror gloss finish. The wax protects bodywork from the everyday traffic film that builds up on the surface. The unique interlinked protection system combines paraffin wax for spreading, montanic wax to speed buffing time and hard synthetic beeswax for a tough glaze protection.

DIRECTIONS

- 1** - Shake bottle well before use and ensure surface is spotlessly clean, dry and cool
- 2** - Apply a small amount of wax to the **G3 Pro Black Applicator Waffle Pad**
- 3** - Use circular overlapping motions with even pressure, avoiding plastic trims
- 4** - Allow to haze up and buff to a mirror finish with a soft, clean, dry cloth



SIZE

500 ml

FARÉCLA CODE

7166-EX

ART NO.

780727**64784**



G3 PRO GLASS CLEANER

G3 Pro Glass Cleaner is a powerful, high performance cleaner that cuts through dirt, grime and road film without leaving smears, streaks or rainbows when using window wipers. It is designed to provide excellent clarity.

DIRECTIONS

- 1** - Lightly mist onto all windows, wing mirrors and indicators
- 2** - Gently wipe clean with a clean, dry microfibre cloth
- 3** - Turn the cloth over to the clean side and buff to a finish

SIZE
500 ml

FARÉCLA CODE
7202-EX

ART NO.
780727**64788**

G3 PRO **APPLICATOR WAFFLE PADS**

The **G3 Pro Applicator Waffle Pads** reduce effort and increase effectiveness when applying G3 Pro products. Their unique surface minimises wastage and ensures you get the ultimate finish in the shortest time.

White Applicator Waffle Pad:

Use damp with **G3 Pro Scratch Remover** or **Colour Restorer** in a back and forth motion whilst applying even pressure.

Black Applicator Waffle Pad:

Use with **G3 Pro Resin Superwax** in an overlapping circular motion whilst applying even pressure.

After using either pad, once a suitable finish is achieved, remove any residue and buff with a dry clean microfibre cloth.

CAUTION: After use remove and clean dirt and dried product from the applicator pads. Never use dirty pads!



SIZE	FARÉCLA CODE	ART NO.
500 ml	7167	780727 06635

AUTUMN & WINTER VEHICLE CARE GUIDE

INTERIOR DIRT

When it's wet and muddy outside, chances are that this will get transferred internally resulting in soiled footwells, mud smears on the plastics of the doors and scruffy seats. **G3 Pro Multicleaner** is a strong, all round cleaner that works hard on fabric and hard surfaces. **G3 Pro Leather Cleaner** penetrates deep into leather surfaces to help soften and lift dirt. **G3 Pro Super Dressing** acts as a light cleaner on hard surfaces whilst restoring them.



A cold, wet time of year, Autumn and Winter seasons can play havoc with your vehicle's bodywork. Here are a few steps to help you look after and protect surfaces.

SPRING & SUMMER VEHICLE CARE GUIDE

JUST OUT OF WINTER

Wet, muddy conditions on the roads, coupled with a desire to not be outside cleaning, can develop an undesirable look for your vehicle. This means that dirt can become stubborn on your vehicle, difficult to remove easily and cause damage to your paintwork if removed with shampoo or even just sprayed with water. **G3 Pro Snow Foam** is gentle on the surface, but tough on dirt. Contaminants are softened and lifted for easy, safe removal.



As the sun comes, Spring and Summer are the seasons when you want to be out and about. Your vehicle needs to look its best. Here are a few steps to help you look after and protect surfaces.

BRIGHT & SHINY

As everything is looking shinier and cleaner after the cold, wet months, make sure your vehicle's bodywork reflects this change. Clean with **G3 Pro Shampoo** followed by a quick and easy application of **G3 Pro Resin Superwax** or **G3 Pro Spray Wax**. The surface will have that professional showroom finish as you take your Spring and Summer drives and road trips.

HIDDEN DIRT

Grit and dirt from the road can leave micro particles on your vehicle's surfaces that shampooing simply can't reach. These particles can scratch the bodywork over a long period of time which will cause dulling, hazing, swirl marks and holograms. Combat this with a **G3 Pro Deep Clean Clay Mitt** used with **G3 Pro Rapid Detailer** to pick up those micro-particles.

APPEARANCE OF DEFECTS

After the battering from the Winter months, your vehicle will have developed defects to the paintwork from scratches to fading. These will be more noticeable as days become sunnier. Using your choice of G3 Pro **RESTORE** products will easily deal with light scratches, swirl marks, holograms and dulling without using fillers. This means that the work put into rectifying the paintwork will be permanent and defects will not reappear after several washes or rainy days.





G3 PRO D.A. CUTTING COMPOUND

**EASY HANDLING, LOW DUSTING
PAINT CORRECTION LIQUID**

PRODUCT DESCRIPTION

G3 Pro D.A. Cutting Compound is an efficient paint correction liquid that uses Engineered Abrasive Technology, exclusive to Farécla, to rapidly eliminate surface defects.

SIZE	FARÉCLA CODE	ART NO.
500 ml	7500	78072729773
1 l	7506	78072729809



G3 PRO D.A. FINE POLISH

**REMOVES LIGHT IMPERFECTIONS
FOR A MIRROR SHINE FINISH**

PRODUCT DESCRIPTION

G3 Pro D.A. Fine Polish is a light abrasive liquid that uses Engineered Abrasive Technology, exclusive to Farécla, to remove minor imperfections for a mirror shine finish.

SIZE	FARÉCLA CODE	ART NO.
500 ml	7501	78072729802



G3 PRO MICROFIBRE CUTTING PAD

Use with a dual action polisher to eliminate surface imperfections. Ideal for hard OE paint when used with G3 Pro D.A. Cutting Compound.

SIZE	FARÉCLA CODE	ART NO.
150 mm	7502	78072729804



G3 PRO FOAM CUTTING PAD

Use with a dual action or rotary polisher to eliminate surface imperfections. Ideal for OE and refinish paints when used with G3 Pro D.A. Cutting Compound.

SIZE	FARÉCLA CODE	ART NO.
150 mm	7503	78072729807



G3 PRO FOAM POLISHING PAD

Use with a dual action polisher for a mar-free, mirror shine finish. Ideal for OE and refinish paints when used with G3 Pro D.A. Fine Polish.

SIZE	FARÉCLA CODE	ART NO.
150 mm	7504	78072729808

G PLUS DUAL ACTION POLISHING MACHINE



The G Plus Dual Action Polishing Machine has been developed to Farécla's own specifications. The soft start motor helps reduce product splash while the speed stabilisation offers the operator a constant speed output.

The ergonomically engineered handle fits snugly into the grip of the operator and it is an exceptionally well-balanced machine thanks to its precision, CNC-machined counterweight that minimizes vibration and the associated user fatigue.

The 15mm orbit strikes the balance between speed and vibration. A larger throw than many orbital polishers gives faster paint correction, while having far less vibration than some larger throw polishers.

15MM THROW

Balancing speed of paint correction with machine vibration.

PRECISION ENGINEERED COUNTERWEIGHT

Minimizes Vibration and the associated user fatigue.

LIGHTWEIGHT

Only 2.6kg, reducing muscle fatigue.

SPEED INDICATOR

Lets you polish at the recommended OPM for optimal performance.

BACK PLATE INCLUDED

Multi-hole 123mm Back Plate promotes air flow to help maintain a low polishing temperature.



15mm
ORBIT



DUAL
ACTION



WELL
BALANCED



2000 -
4500rpm



LOW
VIBRATIONS



LIGHTWEIGHT
(2.6kg)



220 - 240V -
(50/60Hz)



5 METER
POWER CORD

FARÉCLA CODE	ART NO.
GPT202 (EU plug)	78072729810
GPT203 (UK plug)	66261133036



A SAINT-GOBAIN BRAND

Saint-Gobain Abrasifs, European Headquarters
251 Rue de l'Ambassadeur, 78700 Conflans, France
Tel: +33 (0)1 34 90 40 00, Fax: +33 (0)1 34 90 43 97

www.nortonabrasives.com

www.youtube.com/NortonAbrasiveSEMEA

www.farecla.com

form# 4142



g3professional