

NORTON

STONE AND CONCRETE MARKET

CATALOG #8063

DIAMOND AND
ACCESSORY PRODUCTS



ALL THE **MUSCLE** YOU NEED™



TM



MIRROR FINISH RESULTS

It is no wonder grinding and polishing of concrete has become so popular. The work is labor intensive, but the ongoing durability and low maintenance pays off. And our surface preparation products and equipment will aptly help reflect the lasting beauty.



CG25S FLOOR GRINDER

For leveling or removal of coatings and adhesives on small to medium jobs, the CG25S, single 10" head floor grinder is a perfect choice.



Light Weight Design

- Compact for transportation
- Easy for professionals and do-it-yourself rentals



10" Single Grinder Head

- Good grinding coverage

TECHNICAL SPECIFICATIONS	CG25S
Product Number	701846 30015 5
Grinding Width – in. (mm)	10" (250)
Grinding Disc Size – in. (mm)	10" (250)
Number of Heads / Tools Per Head	1 / 1
Grinder / Polisher Type	Grinder
Grinding Head RPM	1,440
Direction of Rotation	Clockwise
Production Rate – sq ft/hr (m2/hrs)	200-400 sq ft/hr (18.5-37 m2/hr)
Power Source / Motor Type	Electric / Baldor
Maximum Horsepower* / Net Horsepower*	1-3/4 HP / 1-3/4 HP
Voltage/Cycle*/Current/Phase	115 volts/60Hz/AC/1
Full Load Amps / Starting Amps	15 Amps / 71.4 Amps
Vacuum Port Size	2" (50)
Length – in. (mm)	46.4" (1,180)
Width – in. (mm)	20.5" (520)
Height – in. (mm)	45.3" (1,150)
Weight Uncrated – lbs. (kg)	154 lbs (70 kg)

*Data provided by motor manufacturer



CG435 GRINDER/POLISHER

The flexibility of the planetary heads follow the contour of floor for a more uniform surface. Quick and easy removal and mounting of tooling is virtually effortless.



Floating Body Design

- Allows grinding over rough surfaces
- Less diamond breakage/chipping

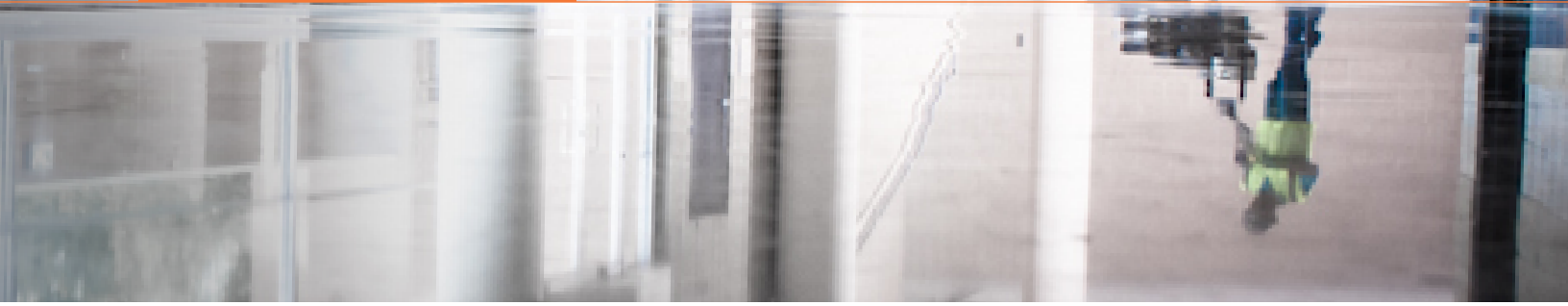


Quick Diamond Insert/ Detach Plates

- Reduces labor attaching and detaching diamond tooling

TECHNICAL SPECIFICATIONS	CG650
Product Number	701846 30016 2
Grinding Width – in. (mm)	17-1/8" (435)
Grinding Disc Size – in. (mm)	6" (155)
Number of Heads / Tools Per Head	3 / 3
Grinder / Polisher Type	Planetary Grinder/Polisher
Plate RPM	750
Drum RPM	70
Direction of Rotation	Clockwise
Production Rate – sq ft/hr (m2/hrs)	150-250 sq ft/hr (13.9-23.2 m2/hr)
Power Source / Motor Type	Electric / Baldor
Maximum Horsepower* / Net Horsepower*	1-3/4 HP / 1-3/4 HP
Voltage/Cycle*/Current/Phase	115 volts/60Hz/AC/1
Full Load Amps / Starting Amps	15 Amps / 71.4 Amps
Vacuum Port Size	2" (50)
Length – in. (mm)	27.6" (700)
Width – in. (mm)	17.1" (435)
Height – in. (mm)	47.2" (1200)
Weight Uncrated – lbs. (kg)	254 lbs (115 kg)

*Data provided by motor manufacturer



CG500 FLOOR GRINDER

With an ergonomic design, better weight distribution of the CG500 combined with the Norton diamond tooling offers exceptional performance to surface preparation.



Three Head Planetary Heads

- Wide 20" coverage for faster results



Bi-directional heads

- Ensures a smoother, level finish

TECHNICAL SPECIFICATIONS

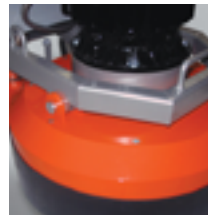
TECHNICAL SPECIFICATIONS	GC500
Product Number	701846 43071 5
Grinding Width – in (mm)	19.68" (500)
Grinding Disk Size – in (mm)	5.9" (150)
Number of Heads / Tools Per Head	3 / 3
Grinder / Polisher Type	Planetary Grinder/Polisher
Plate RPM	500-1100
Direction of Rotation	Clockwise
Power Source	Electric
Maximum Horsepower* / Net Horsepower*	5 HP (4kW) / 5 HP (4kW)
Voltage/Cycle*/Current/Phase	230v / 60/1 (Motor uses 60/3)
Full Load Amps / Starting Amps	17.6 Amps / 83.8 Amps
Vacuum Port Size	2" (50)
Length – in (mm)	45.3" (1150)
Width – in (mm)	20.9" (530)
Height – in (mm)	43.3" (1100)
Weight Uncrated – lbs. (kg)	374 lbs (170 kg)

*Data provided by motor manufacturer



CG650 FLOOR GRINDER

If bigger is better, then the CG650 is what you need. The large 5HP motor with soft start reduces gouging and unwanted scratches during start up.



Wide Grinding Coverage

- Operator-friendly floating head



Three Bi-Directional Heads

- Six tooling mounts per head for best performance

TECHNICAL SPECIFICATIONS

TECHNICAL SPECIFICATIONS	CG650
Product Number	701846 43636 6
Grinding Width – in (mm)	25" (650)
Grinding Disk Size – in (mm)	8.3" (210)
Number of Heads / Tools Per Head	3 / 6
Grinder / Polisher Type	Planetary Grinder/Polisher
Plate RPM	300-1100
Direction of Rotation	Both
Power Source	Electric
Maximum Horsepower* / Net Horsepower*	5.4 HP (4kW) / 5 HP (4kW)
Voltage/Cycle*/Current/Phase	230v / 50/60/1
Full Load Amps / Starting Amps	30 Amps / Soft Start
Vacuum Port Size	2" (50)
Length – in (mm)	44.1" (1120)
Width – in (mm)	25.8" (655)
Height – in (mm)	53.9" (1370)
Weight Uncrated – lbs. (kg)	705 lbs (320 kg)

*Data provided by motor manufacturer

Early Entry/Green Concrete Saw GC25EUP

The ideal saw for indoor cutting, expansion joint cleaning, crack control and other concrete surface preparation work. The GC25EUP has all the features of the GC25E, but carries a smooth running 3HP up-cut electric motor. Its vacuum port on the blade guard ensure debris is pulled out of the cut and into a collection system. Light-weight and compact, the GC25EUP is the perfect saw for any concrete surface or decorative contractor need. Each saw includes a 8" Tuck Point Diamond Blade.

UPC	MOTOR	WEIGHT	BLADE	QTY
701846 42445 5	Electric	115 lbs	10"	1



Compact Frame Design

- Easy transport
- Even weight distribution
- Three horse power up-cut electric motor



Vacuum Port

- Attaches to standard vacuum for debris removal



Improved Wheel Design

- Stable cutting over debris
- Helps keep saw in line of cut



Fold-Down Design

- Ideal for decorative application where space is limited getting in and out



CV324 Vacuum System

Ideal for clean and dust-free job sites. Its strong dual motor ensures extraction of dust for commercial operations. The container holds up to 10 gallons of debris and is easily removed for cleaning. The top-mounted manual shaker releases dust, extending the life of the filter.

Part Number: 701846 **30017** 9

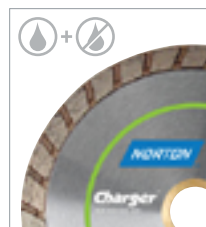
Recommended Diamond Blades – Dry Cutting

The versatility of the GC25EUP saw allows a variety of blades and wire brushes from 6" to 10" to be used in a multitude of applications.

UPC	SIZE / DESCRIPTION
701846 81513 0	8 x .090 x DM-7/8-5/8 Charger Segmented Rim
701846 81512 3	8 x .090 x DM-7/8-5/8 Charger Turbo Rim
701846 45138 3	8 x .125 x DM-7/8-5/8 Segmented Rim
701846 81780 6	8 x .250 x 7/8-5/8-20mm Norton Classic Tuck Pointing
701846 44208 4	8 x .375 x 7/8-5/8-20mm Charger Segmented V-Shaped Crack Chasing



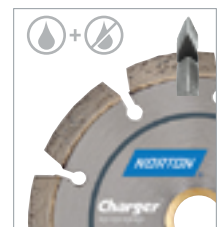
SEGMENTED



TURBO RIM



TUCK POINT



V-SHAPE

Early Entry/Green Concrete Saws GC55/GC25E

With a compact, light-weight design and the option of either gas or electric, the GC55 and GC25E early entry saws are ideal for cutting green, cured or decorative concrete as well as expansion joints. The low, wide profile of the frame along with the front mount blade, both contribute to producing a more disciplined cut. Each saw comes with a 10" GMAX Green Concrete Diamond Blade.

UPC	MOTOR	WEIGHT	BLADE	QTY
701846 30005 6	GC55 Gas	115 lbs.	10"	1
701846 30004 9	GC25E Electric	115 lbs.	10"	1



Gasoline Engine

- Mounted with the dependable Honda 5.5HP engine for best performance



Front Blade Mount

- Additional weight helps keep blade in the cut



Improved Wheel Design

- Stable cutting over debris
- Helps keep saw in line of cut



Fold-Down Design

- Easy storage and transport



Green Concrete Diamond Blades

Must have blade. Critical to results of green concrete cutting. The anchor slot core technology reduces vibration for straighter, cleaner cuts. The diamond content and bond combination allow a smooth and faster cut with long life in abrasive materials with hard aggregates.

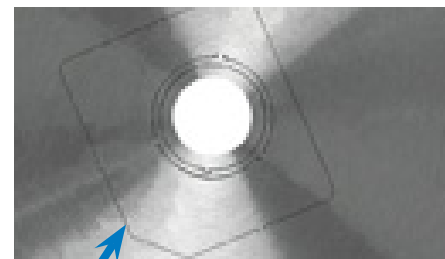
UPC	SIZE	WIDTH	ARBOR	QTY
701846 83758 3	8"	.095"	7/8-5/8	1
701846 75125 4	9"	.110"	7/8-5/8	1
701846 84508 3	10"	.110"	7/8-5/8	1



ANCHOR SLOT GULLET TECHNOLOGY increases productivity by reducing vibration, for a smoother cut, while keeping the blade cool and extending life.



THICKER CORE resists flexing and provides a straighter and faster cut for less spalling.



EXCLUSIVE UNIVERSAL ARBOR allows the GMAX blade to be used on most early entry/green concrete saws

PERFORMANCE **READILY AT HAND**

Having the right equipment is essential for ensuring quality results. Norton offers hand-held core drills and concrete saws that offer maximum flexibility in their design to provide optimal maneuverability and safety on job sites.

Hand-Held Core Drill HHDET1800

A light-weight and user-friendly core drill. With its “Smart Electronic” motor protection from Cardi means no overheating of electrical parts. The powerful 15 amp motor drives core bits up to 4” with ease. The HHDET1800 hand-held core drill has a single speed gear box and mechanical safety clutch. Packaged in a rugged carrying case to protect the drill during transport.



Water Attachment and Accessories

- 1-1/4-7 Male with 5/8-11 adapter
- Quick attach water accessories for wet drilling



Smart Electronics Protection

- No over heating of electrical components

TECHNICAL SPECIFICATIONS	HHDET1800
Product Number	701846 84243 3
Gears	1
Motor Type	Electric
Voltage	115 volts
Cycle*/Current/Phase	60Hz/AC/1
Amperage*	15 Amps
RPM (No Load)	940
Smart Electronics	YES
Weight Crated – lbs. (kg)	18 lbs (8.1 kg)
Weight Uncrated – lbs. (kg)	12 lbs (5.4 kg)
Recommended Bit Sizes	
Low – in. (mm)	2" to 4" (50 to 102)
Accessories	
Portable Stand CD100	003100 07829 0
Centering Aid for CARDI	701846 23517 4
Vacuum Pump for CD100	701846 79912 6
Core Bit Quick Release Attachment	701846 00938 6

*Data provided by motor manufacturer

Hand-Held Core Drill HHDETOL

Weighing only 13 pounds, the HHDETOL is a Cardi hand-held core drill with a 15 amp motor. The “Smart Electronic” system protects it from system overload. This unit comes with a durable plastic carrying case, safety clutch, 5/8-11 threaded adapter and 1-1/4-7 threaded spindle. Ideal for electricians, plumbers and the professional contractor.



1-1/4" – 7 Spindle with 5/8-11 Threaded Adaptor

- Allows additional bit types to be used

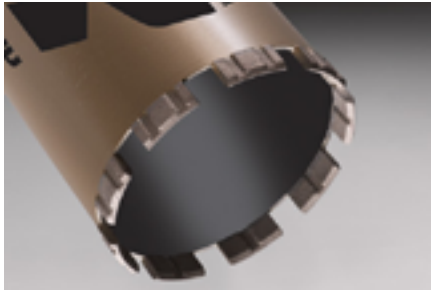


Heavy-Duty Carrying Case

- Light-weight, high-impact plastic
- Protects drill during transportation

TECHNICAL SPECIFICATIONS	HHDETOL
Product Number	701846 00917 1
Gears	2
Motor Type	Electric
Voltage	115 volts
Cycle*/Current/Phase	60Hz/AC/1
Amperage*	15 Amps
RPM (No Load)	1,180/2,150
Smart Electronics	YES
Weight Crated – lbs. (kg)	19 lbs (8.6 kg)
Weight Uncrated – lbs. (kg)	13 lbs (5.9 kg)
Recommended Bit Sizes	
Low – in. (mm)	2" to 4" (50 to 102)
High – in. (mm)	1/2" to 2" (12 to 50)
Accessories	
Portable Stand CD100	003100 07829 0
Centering Aid for CARDI	701846 23517 4
Vacuum Pump for CD100	701846 79912 6
Core Bit Quick Release Attachment	701846 00938 6

*Data provided by motor manufacturer



Core Bits

X3

Unique segment geometry provides quicker penetration with exceptional cutting speed in critically hard materials using standard speed, core drill equipment.

UPC	TIER	SIZE	QTY
701846 82797 3	X3	1"	1
701846 82798 0	X3	1-1/4"	1
701846 82799 7	X3	1-1/2"	1
701846 82800 0	X3	1-3/4"	1
701846 82801 7	X3	2"	1
701846 82802 4	X3	2-1/4"	1
701846 82803 1	X3	2-1/2"	1
701846 82804 8	X3	3"	1



Charger

Laser welded segments for faster penetration in medium aggregate with reinforcement and maximum utilization of segment life.

UPC	TIER	SIZE	QTY
701846 82778 2	Charger	1"	1
701846 82779 9	Charger	1-1/4"	1
701846 82780 5	Charger	1-1/2"	1
701846 82781 2	Charger	1-3/4"	1
701846 82782 9	Charger	2"	1
701846 82783 6	Charger	2-1/4"	1
701846 82784 3	Charger	2-1/2"	1
701846 82785 0	Charger	3"	1



Norton Classic

Economical choice for use in harder concrete with heavy reinforcement and masonry materials with good performance.

UPC	TIER	SIZE	QTY
701846 84447 5	Norton Classic	1"	1
701846 84448 2	Norton Classic	1-1/2"	1
701846 82762 1	Norton Classic	2"	1
701846 82763 8	Norton Classic	2-1/4"	1
701846 82764 5	Norton Classic	2-1/2"	1
701846 82765 2	Norton Classic	3"	1

PART OF THE DAILY GRIND

Tools designed to work hard so you don't have to. You get an optimized unit pressure with improved surface finish minus the deep gouges. So, you get work done faster with less surface removed for a smoother floor to be polished.



FEATURES AND BENEFITS

- Unique bond and diamond specification designed for hardness and abrasiveness of concrete.
- Specific diamond segment geometry to optimize unit pressure and improve surface finish and prevent deep gouges.
- Tapered and beveled tools (Quick Change System) for quick and easy changing of tools.
- Serrated segment tops for quick early grinding. No break in period.
- Color coded by grit for easy identification.
- Packed 3 per box for either 3 or 4 head grinders.

GRIT SIZES

18/20 – Aggressive diamond tool for heavy stock removal and/or cure and seal coatings.

30/40 – Coating removal of 0.5-10 mm. Generally first stage tool for polishing a rough concrete slab.

60/80 – Initial polishing tool for new concrete. Will prepare surface for acid staining or thin sealants.

120/150 – The final grit prior to changing to resin polishing tools or where a smooth open concrete surface is required.

Abrader Metal Bond Diamond Tools

Rectangle Segment

The rectangle shaped segments are the softest bond and are designed for very hard concrete. The ridged shape of the rectangle improve grinding capabilities and ensure fast stock removal. Suggested for surfaces with a large percentage of chert, flint, gabbro and other hard materials.

Boomerang Segment

The boomerang shaped segments are designed for medium hardness floors. The shape and specification are considered universal due to its versatility on a wide range of surfaces especially on granite, quartzite and river gravel to name a few. Having a boomerang shape allows the segment to cut quickly while removing *swarf* away from the segment to ensure a continuous cutting action.

Button Segment

The hardest of segments, the Abrader button segment is designed to remove stock and level abrasive floors quickly and extends life in very abrasive concrete. A full circular shape provides a smooth entry into the surface. It protects the floor from being gouged unlike other stock removing bits with sharp edges. Thus allowing you to get the work done faster with a minimum of surface removal leaving a smooth level floor to be polished.

UPC	PART #	GRIT	QTY
Rectangle Segment			
701846 45492	6 FGW 3-PACK HARDFLOOR QCS	18/20 SILVER	3
701846 43705	9 FGW 3-PACK HARDFLOOR QCS	30/40 GREY	3
701846 43706	6 FGW 3-PACK HARDFLOOR QCS	60/80 BROWN	3
701846 43707	3 FGW 3-PACK HARDFLOOR QCS	120/150 BLACK	3
Boomerang Segment			
701846 45494	0 FGW 3-PACK UNIVERSAL QCS	18/20 SILVER	3
701846 43708	8 FGW 3-PACK UNIVERSAL QCS	30/40 GREY	3
701846 43709	7 FGW 3-PACK UNIVERSAL QCS	60/80 BROWN	3
701846 43710	3 FGW 3-PACK UNIVERSAL QCS	120/150 BLACK	3
Button Segment			
701846 45493	3 FGW 3-PACK SOFTFLOOR QCS	18/20 SILVER	3
701846 42896	5 FGW 3-PACK SOFTFLOOR QCS	30/40 GREY	3
701846 42897	2 FGW 3-PACK SOFTFLOOR QCS	60/80 BROWN	3
701846 42898	9 FGW 3-PACK SOFTFLOOR QCS	120/150 BLACK	3

TECHtip

Remember to utilize our conversion plates so the diamond tooling can be inserted and removed easily without the use of screws.

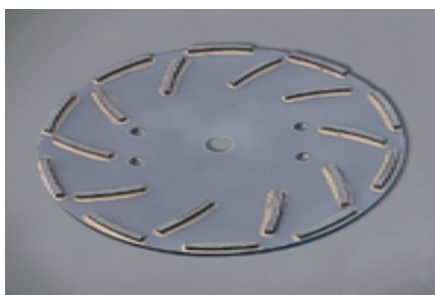




Metal Bonded Diamond Tool Conversion Plate

The unique metal bonded conversion plate is machined to hold Norton tooling without the use of screws or other mechanical devices. The arbor configuration fits many machine models on the market. The three mounting holes in the plate allow the plate to be mechanically fastened to the bottom of any machine. Other plates available to fit most machines on the market.

PART NUMBER	MACHINE	MODEL #S	PLATE DIAMETER	QTY
701846 28588 9	HTC	2500ix, 1500 ixT, 950RX, 800HDX & 800HD	10-5/8"	9
701846 30932 5	HTC	650HDX, 500	8-5/8"	1
701846 30342 2	SASE	780	9"	1
701846 28588 9	CPS	G-320, G-250 & G-250XT	10-5/8"	1
701846 30933 2	Innovatech	P-3200	10-1/2"	1
701846 30496 2	Prepmaster	STI3030	14"	1



Grinder Heads

High quality diamond and bond combination designed for long life and fast cut. Ten segment grinder heads are ideal for fast surface removal, while the 20 segment head produces a smooth, fine surface.

UPC	PART #	DESCRIPTION	NO OF SEGMENTS	QTY
701846 49531 8	30120018	For fast removal	10	1
701846 49529 5	30120026	For smooth finish	20	1



Dyma-Serts

A 30 grit metal bonded diamond insert created to smooth trowel marks, grind concrete imperfections, removal of epoxy coatings or urethane and leveling high spots or sharp aggregates from surface in a wet or dry process. The unique diamond and bond specification increase performance by as much as five (5) times the life span of the standard grinding stones typically used in surface removal applications. The locking pin ensures the Dyma-Serts are securely fitted to the rubber backer for quick insert or removal from the grinder head.

UPC	DESCRIPTION	GRIT	QTY
701846 44956 4	Dyma-Sert, Rubber Backer, Plastic Wedges, Case	30	3

ADDING A SUPERIOR SHINE

Initial price or maximum productivity, we offer options for any level of polishing for the application need. In the end, they all deliver a long-lasting shine at the desired sheen.



FEATURES AND BENEFITS

- Economically priced
- Good stock removal for effective closure at each grit level
- Produces a long-lasting shine
- Area coverage/cost ratio is very competitive



FEATURES AND BENEFITS

- High stock removal
- Provides a closed matte surface at 80 grit
- Provides a closed silk finish at 120 grit

6 Dot Resin Bonded Diamond Tools

The 6 Dot Resin bonded diamond tools are our standard offering for concrete polishing. Offered in 100 – 1500 grit these tools will provide a superior finish and long life. The 6 Dot are also very good for harder aggregates with the unit pressure of the tools polish even the hardest floors.

UPC	PART #	GRIT / COLOR	QTY	
701846 28551	3	28551	100 / Black	9
701846 28552	0	28552	200 / Blue	9
701846 28553	7	28553	400 / Red	9
701846 28554	4	28554	800 / White	9
701846 28555	1	28555	1500 / Yellow	9

RESIN BONDED TOOL GRIT SIZES

GRIT / COLOR	APPLICATION
6 Dot Diamond Tools	
100 Grit (Black) ●	Initial grit after 120 grit grinding stage. Leaves a matte finish.
200 Grit (Blue) ●	Follows the 100 grit and leaves a closed matte finish.
400 Grit (Red) ●	Follows the 200 grit and will leave a honed/silk finish.
800 Grit (White) ○	Follows the 400 grit and will leave an economical, light reflective finish most popular in large area industrial and commercial applications.
1500 Grit (Yellow) ●	Follows the 800 grit, producing a clear reflective shine, with reduced swirl effect. Ideal for decorative surfaces.

T2 Resin Bonded Polishing Tool

The mixed bond of the T2 range ensures a very fine scratch pattern profile in relation to a standard metal bond segment where the concrete or terrazzo surface is smooth trowelled or has already been leveled with a coarse metal bond tool. The T2 leaves the perfect surface for either closed matte finishing or polishing with the minimum number of stages.

UPC	PART #	GRIT / COLOR	QTY	
701846 28548	3	28548	40 / Gray	9
701846 28549	0	28549	80 / Orange	9
701846 28550	6	28550	120 / Black	9

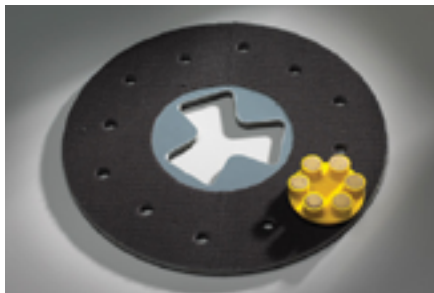
RESIN BONDED TOOL GRIT SIZES

GRIT / COLOR	APPLICATION
T2 Polishing Tools	
40 Grit (Gray) ●	Initial polishing following coarse metal bond tool.
80 Grit (Orange) ●	Initial polishing following 40 grit metal bond tool or first cut on smooth concrete floor.
120 Grit (Black) ●	Initial polishing tool following 80 Grit metal bond tool or first cut on smooth concrete floor.



FEATURES AND BENEFITS – High Performance Resin Bonded

- Long life
- Low incidence of swirl/ghost marks
- Cool running allows use on epoxy terrazzo up to 800 grit
- High shine performance at 1500 grit
- No kaleidoscopic scratches at any speed



High Performance Resin Bonded Diamond Tools

The High Performance Resin bonded tools offer superior gloss and product life. The unique all resin/diamond construction of the High Performance tooling allows you to polish at the highest speeds on the heaviest machines. You can polish faster with gloss results second to none.

UPC	PART #	GRIT / COLOR	QTY
701846 28556 8	28556	100 / Black	9
701846 28557 5	28557	200 / Blue	9
701846 28558 2	28558	400 / Red	9
701846 28559 9	28559	800 / White	9
701846 28560 5	28560	1500 / Yellow	9

RESIN BONDED TOOL GRIT SIZES

GRIT / COLOR	APPLICATION
High-Performance Tools	
100 Grit (Black) ●	Initial grit after 120 grit grinding stage. Leaves a matte finish.
200 Grit (Blue) ●	Follows the 100 grit and leaves a closed matte finish.
400 Grit (Red) ●	Follows the 200 grit and will leave a honed/silk finish.
800 Grit (White) ○	Follows the 400 grit and will leave an economical, light reflective finish most popular in large area industrial and commercial applications.
1500 Grit (Yellow) ●	Follows the 800 grit, producing a clear reflective shine, with reduced swirl effect. Ideal for decorative surfaces.

Resin Bonded Diamond Tool Conversion Plate

Our unique metal bond tool conversion plates are designed to hold our diamond tools without the use of screws. The tools slide into the beveled and tapered slots on the plate for easy installation and change over. We offer a variety of arbor configurations to fit most of the popular machines on the market.

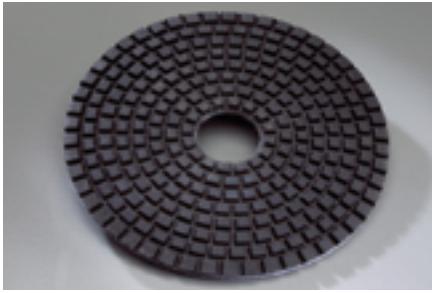
UPC	PART #	SIZE	QTY
701846 29013 5	29013	270 x 5mm	1

UPC	PART #	DESCRIPTION	QTY
Resin Bond Inserts			
701846 30931 8	30931	For 6 Dot Resin & T2 Combination Tools	1
701846 30930 1	30930	For High Performance Resin Tools	1

TECHtip

Our high performance resin bonded diamond tools are designed for heavy machines. They excel at the highest speeds.





5" Hook & Loop Resin Bonded Edging Pad

The 5" hook & loop resin bonded edging pad is used to polish the perimeter of the work space along with hard-to-reach areas. Using the same durable bonding system as our resin tools, the edging pad offers long life and superior finish. Our grit range is from 60 to 3,000. The pad fits all 5" Velcro backup pads for most 5" right angle grinders.

UPC	PART #	GRIT	QTY
701846 28561	28561	60	1
701846 28562	28562	100	1
701846 28563	28563	200	1
701846 28564	28564	400	1
701846 28565	28565	800	1
701846 28566	28566	1500	1
701846 28567	28567	3000	1



4" Hook and Loop Resin Bonded Edging Discs

Hook and loop back, high performance, small diameter resin bonded edging discs are ideal for counter top polishing, stairwell steps and other areas where there may be space restrictions that need polishing. Our bond and diamond specification ensure the very minimum of removal leaving a smooth flawless surface.

UPC	COLOR	SIZE	GRIT	QTY
701846 45013	Blue	4"	50	10
701846 45014	Yellow	4"	100	10
701846 45015	Orange	4"	200	10
701846 45016	Red	4"	400	10
701846 45017	Green	4"	800	10
701846 45018	Teal/Lt. Blue	4"	1500	10
701846 45019	Tan	4"	3000	10
701846 45020	White	4"	Buff	10
701846 45021	Black	4"	Buff	10
701846 45022		4"	Kit	1

*KIT INCLUDES: ONE EACH OF THE RESIN DISCS, WHITE BUFF PAD AND BLACK BUFF PAD

ULTIMATE PROTECTION THAT LASTS

Unsurpassed technology makes our maintenance products top of the line for concrete and natural stone floors. From deep cleaning to regular maintenance cleaning, we have an answer to reflect a lasting impression.



FEATURES AND BENEFITS

- No harsh coatings required
- System can be used with an auto scrubber, even dry
- No need for specialized contractors to perform the cleaning process
- Provides a more consistent finish on a variety of surfaces
- Minimizes heat build-up on dry applications resulting in a higher gloss

DIAMOND PAD PERFORMANCE DATA

PAD	TIME LASTED	AREA POLISHED
COARSE	3 hrs 30 min	23,589 sq. ft
MEDIUM	6 hrs 50 min	48,589 sq. ft
FINE	9 hrs 10 min	64,777 sq. ft
VERY FINE	9 hrs 10 min	64,777 sq. ft

Internal testing performed on a polished concrete floor.

TECHtip

These pads are ideal for marble and terrazzo for both deep cleaning/ renovating and standard maintenance to keep the shine. However, these pads are not recommended for granite.

Coarse

The coarse diamond maintenance pad is perfect for cleaning and resurfacing concrete or natural stone floors. It works very well for floors that are very dirty with light surface scratches. The coarse grit pad should be followed by the medium pad as you re-surface the floor.

UPC	SIZE	QTY
701846 43513 0	7"	2
701846 43517 8	13"	2
701846 41575 0	17"	2
701846 41579 8	20"	2
701846 44146 9	27"	2

Medium

The medium grit pad is the second step to re-surfacing a natural stone or concrete floor following the coarse pad. It can also be the starting pad if the floor is slightly dirty with faint surface scratches.

UPC	SIZE	QTY
701846 43514 7	7"	2
701846 43518 5	13"	2
701846 41576 7	17"	2
701846 41580 4	20"	2
701846 44147 6	27"	2

Fine

The fine grit pad is the third step in the re-surfacing of a natural stone or concrete floor following the Medium grit. Can also be used a maintenance pad on most surfaces to keep the shine of the floor on a regular basis.

UPC	SIZE	QTY
701846 43515 4	7"	2
701846 43519 2	13"	2
701846 41577 4	17"	2
701846 41581 1	20"	2
701846 41583 5	27"	2

Very Fine

The very fine grit pad is the final step in the re-surfacing of a natural stone or concrete floor following the Fine grit pad. It is also the recommended pad for on-going maintenance of the floor to keep the shine level of the floor on a regular basis.

UPC	SIZE	QTY
701846 43516 1	7"	2
701846 43520 8	13"	2
701846 41578 1	17"	2
701846 41582 8	20"	2
701846 41584 2	27"	2

Assorted Packs

Perfect for applications where only a few pads are needed to get the job done. Available in the two most popular sizes, the assorted packs contain one each of the grit types; coarse, medium, fine and very fine.

UPC	SIZE	QTY
701846 41589 7	17"	4
701846 41590 3	20"	4

PROLONGING THE LIFE OF YOUR FLOORS WHILE PROTECTING THE ENVIRONMENT



Norton has partnered with Convergent Concrete Technologies to enhance our Natural Stone Care product line by introducing a line of co-branded floor coatings. They conform to “Green Leaf/LEED Qualifying.” They are environmentally-friendly and require no special or hazardous disposal methods. Each unique formula configuration provides a finish that protects against stains and surface wear, prolonging the life of the floor.



Impregnator (HD)

Hardener/Densifier for use in the grinding and polishing process (metal/resin bonded abrasives) of concrete and terrazzo surfaces. Ideal for repolishing and restoring worn and damaged surfaces.

UPC	PART #	DESCRIPTION	QTY
701846 30564 8	30564	1 Gallon	1
701846 30565 5	30565	5 Gallon	1



Protector (Non-Porous)

Advanced, high gloss, stain and wear protection finish for non-porous, highly polished surfaces (1500 grit profiles and above). Great for protecting newly polished concrete, factory-finished stone and terrazzo floors.

UPC	PART #	DESCRIPTION	QTY
701846 30570 9	30570	1 Gallon	1
701846 30571 6	30571	5 Gallon	1



Restorer (Polish)

High gloss protective stain treatment that delivers a rapid shine development with increased abrasion and stain protection. Restores the “wet look” to polished or finished concrete floors.

UPC	PART #	DESCRIPTION	QTY
701846 30574 7	30574	1 Gallon	1
701846 30575 4	30575	5 Gallon	1

*Coatings may be purchased in 55 gallon drums and 275 gallon totes upon request.



PERFORMANCE TIP NATURAL STONE CARE

Coatings need to be applied in thin even layers on the floor surface. Depending on coverage area, you may want to apply coating with pump up or low pressure sprayer. We recommend that once the coating is sprayed on to the floor, that a pre dampened micro-fiber pad is used to ensure that the surface is completely covered and coating is spread consistently and evenly on floor surface.



AT THE END OF THE DAY,
**IT'S THE QUALITY OF THE FINISH
THAT REFLECTS ON YOU.**

And, you want the first impression to be a lasting impression.

With Norton diamond grinding and polishing products, we can help you meet your customer's expectations and maintain them. No matter the floor density, our technologically advanced resin bonds create a mirror finish. And our new coating systems will provide an ongoing shine.

When it's your reputation on the line, don't settle for less. Choose Norton.





- 2 WALK-BEHIND EQUIPMENT AND ACCESSORIES**
- 6 HAND-HELD EQUIPMENT AND ACCESSORIES**
- 8 FLOOR GRINDING**
- 10 FLOOR POLISHING**
- 13 FLOOR MAINTENANCE**



Grinders/Polishers That Reflect Your Passion

Choose from several of our Norton Clipper grinders or polishers that will drive tooling to a mirror finish.



Surface Preparation Made Easy With the GC25EUP

A saw like no other in the market to expedite the process of grout cleaning or reconditioning. Taking refurbishing old floors to new levels.



Floor Preparation Tools To Achieve Perfection

The Abrader Metal Bonded Tools with their unique shape and diamond/bond configuration increase life and performance for the best results in leveling floors.



The Right Diamond For The Right Shine

High gloss shines that will last even in heavy traffic areas with our High Performance Resin Bonded Diamond Tools.



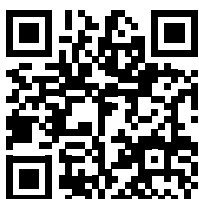
Maintaining That First Impression Of Your Natural Stone and Concrete Floors

The Norton Diamond Floor Pads ensure your floors are the first thing seen when walking through the door.



Eco-Friendly Coatings To Enhance A Shine and Protect Your Investment

Norton has teamed up with Convergent Concrete Technologies giving you all the muscle you need when keeping your floors healthy and shiny.



ALL THE **MUSCLE** YOU NEED.™

www.facebook.com/nortonconstruction | www.youtube.com/nortonconstruction | www.nortonconstructionproducts.com

USA CUSTOMER SERVICE:
Phone Toll Free: 1 800 554-8003
Fax Toll Free: 1 800 443-1092

CANADA CUSTOMER SERVICE:
Phone Toll Free: 1 800 263-6565
Fax Toll Free: 1 800 561-9490

Form #8063 REV.06/13 © Saint-Gobain Abrasives, Inc. June 2013
Norton and Clipper are registered trademarks. Charger, Norton Classic, GMax, X3 and X5 are trademarks of Saint-Gobain Abrasives, Inc.

